

Building dreams  
from the ground up.

HAMLAN



4-5



2-3



2-3



3

# The Stonehaven 302

The little town of Stonehaven makes it possible to enjoy an idyllic rural lifestyle just 10 minutes from Geelong. Similarly, the Stonehaven 302 is designed for country lifestyles with all the benefits of modern design.

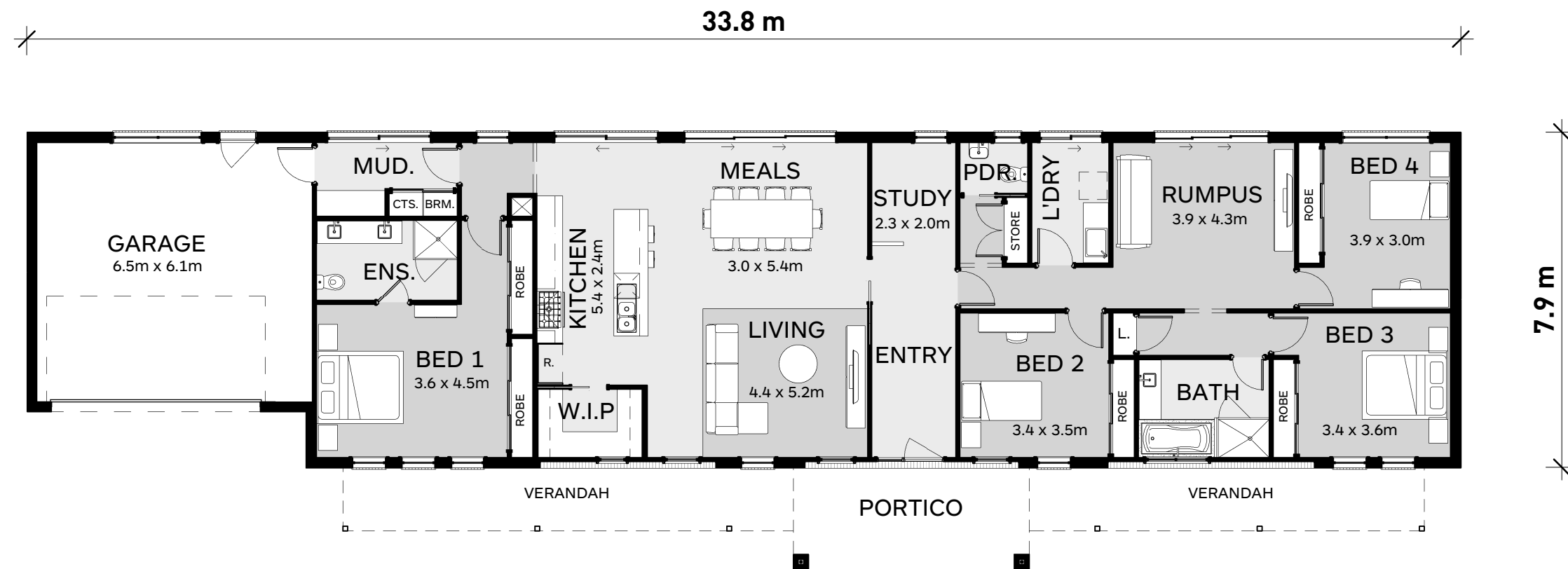
Central to the design of this home is its connection to the outdoors. Sliding doors run along the rear of the home, filling it with light and fresh country air. Direct access from the garage to the mud room ensures that boots and outerwear can be contained from the rest of your beautiful home.

The parent's retreat flows through to the open plan living area, with the kids' wing located at the opposite end of the home. Several spacious options for entertaining and relaxing are provided, including a vast rumpus room. Exceptional storage is dotted throughout the home, featuring a convenient walk-in pantry.

There are plenty of options available to create the perfect home for your lifestyle including adding raked ceilings to your living areas, butler's pantry, study, guest bedroom with ensuite and an alfresco area.

Lot Width: N/A  
Lot Length: N/A

	Area	Squares
Residence Area	213.9 m <sup>2</sup>	23.0
Garage Area	45.0 m <sup>2</sup>	4.8
Verandah Area	15.9 m <sup>2</sup>	1.7
Verandah Area	14.0 m <sup>2</sup>	1.5
Portico Area	13.3 m <sup>2</sup>	1.4
	302.1 m <sup>2</sup>	32.5



## Sales Floor Plan

1 : 125

© Copyright Hamlan Homes

Some images are artistic impressions and are indicative only. While best endeavours have been used to provide information in this publication that is true and accurate. Hamlan Homes and related entities accepts no responsibility and disclaim all liability to any errors or inaccuracies it may contain. Prospective purchasers should make their own inquiries to verify the information contained herein.

[hamlan.com.au](http://hamlan.com.au)

359 Moorabool Street Geelong VIC 3220

T: 5222 5555 / E: [info@hamlan.com.au](mailto:info@hamlan.com.au)