

Building dreams from the ground up.

HAMLAN



The Stonehaven 347

Like its single-storey sibling, the Stonehaven 347 combines the space and freedom of country living with a polished, modern home design. The master bedroom of the Stonehaven 347 is positioned on the first floor which is a quiet retreat away from the rest of the home. It features a large ensuite with a double vanity, bath, separate toilet and walk in robe, along with a balcony where you will be able to enjoy the elevated views.

Kids are zoned to one end of the ground floor and have plenty of space to play in the vast rumpus room.

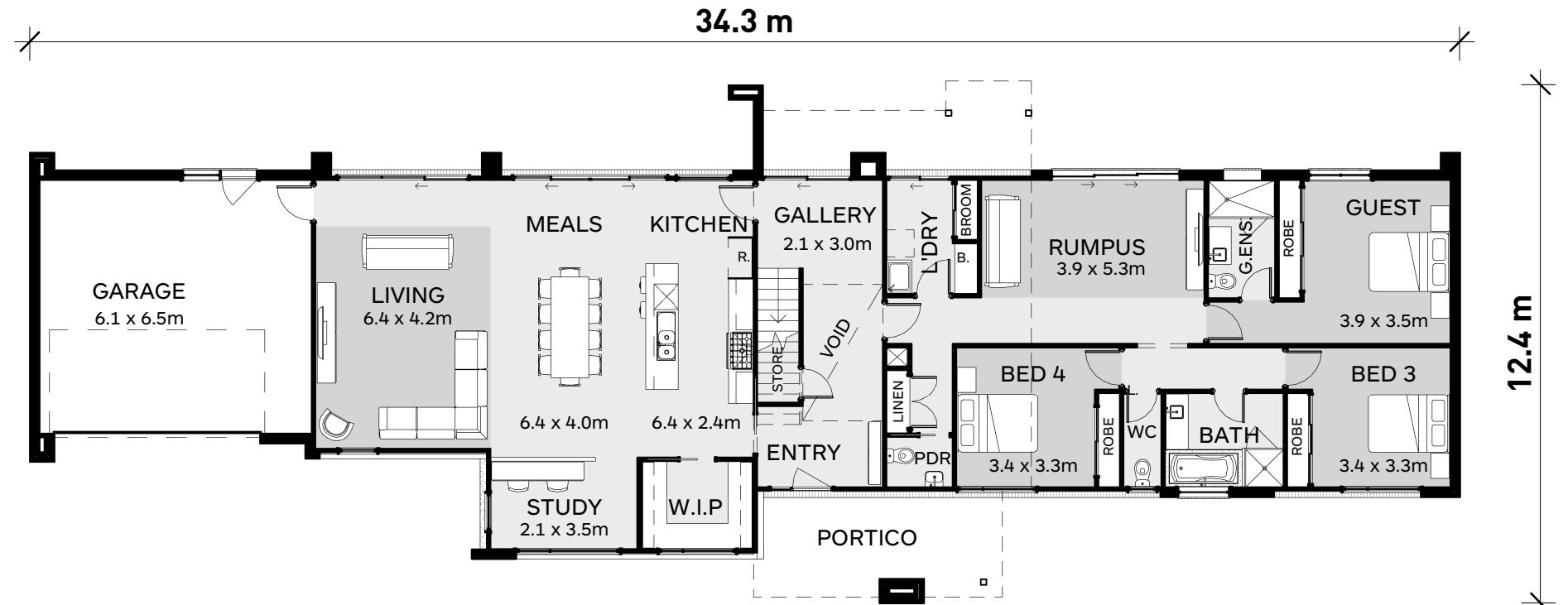
A generous open plan living area and kitchen will be the hub of this grand home with sliding doors that capture the rural outlook and country air.

Guests will also be well accommodated in a double bedroom including their own ensuite. The Stonehaven 347 has had every detail considered. You will be able to move straight in and enjoy this idyllic country lifestyle.

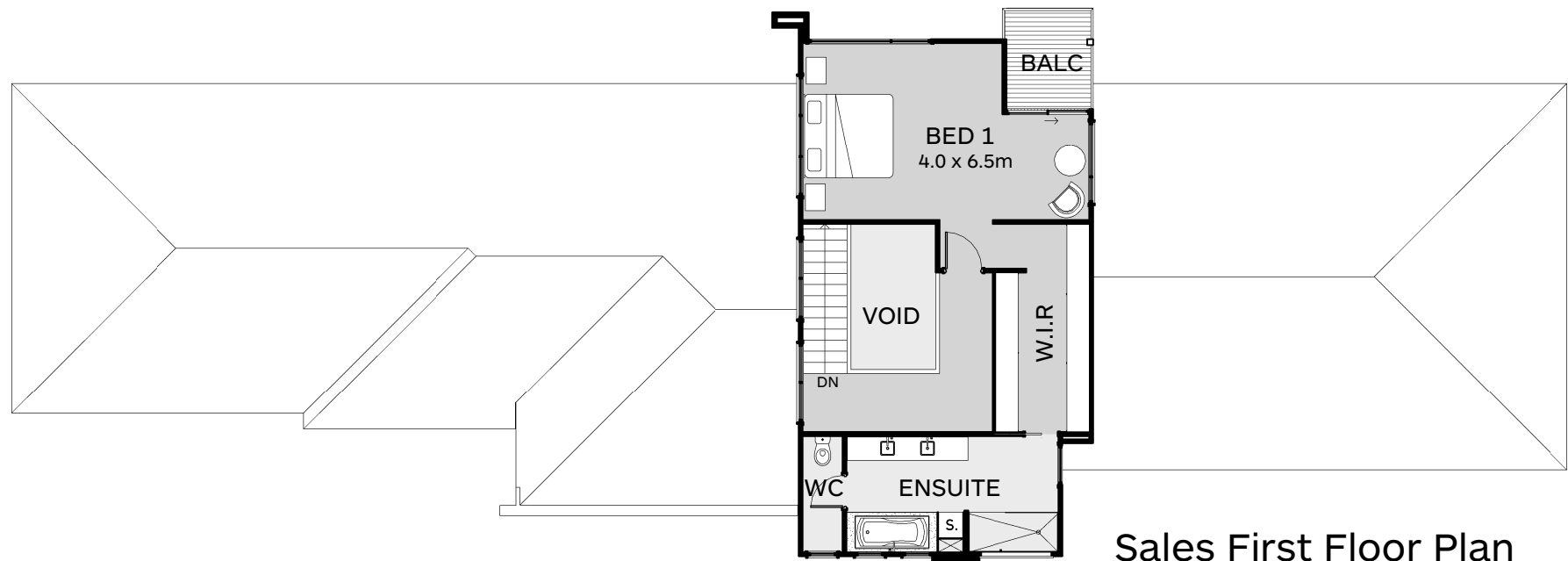
Further luxurious options include adding raked ceilings to the living areas, a mud room, fireplace and extending the garage with an added breezeway.

Lot Width: N/A
Lot Length: N/A

	Area	Squares
Residence Area	221.1 m ²	23.8
First Floor	62.4 m ²	6.7
Garage Area	44.8 m ²	4.8
Portico Area	14.1 m ²	1.5
FF.Balcony	4.5 m ²	0.5
	346.7 m ²	37.3



Sales Ground Floor Plan
1 : 150



Sales First Floor Plan
1 : 150

© Copyright Hamlan Homes

Some images are artistic impressions and are indicative only. While best endeavours have been used to provide information in this publication that is true and accurate. Hamlan Homes and related entities accepts no responsibility and disclaim all liability to any errors or inaccuracies it may contain. Prospective purchasers should make their own inquiries to verify the information contained herein.

hamlan.com.au

359 Moorabool Street Geelong VIC 3220

T: 5222 5555 / E: info@hamlan.com.au