

Building dreams from the ground up.



Erskine 250 Focus Facade

Erskine 250
This large family home ticks all the boxes for those looking for a sea change or planning a knockdown rebuild on an urban block. The Erskine 250 is a welcoming and sophisticated home that has been cleverly designed to suit 14m lots.

The central courtyard is a standout feature that allows an abundance of natural light and fresh air to flow throughout the home. The open plan living, meals and kitchen area is positioned at the rear of the home and provides plenty of space to entertain family and friends. With its large sliding doors that open to the courtyard this home feels well connected to the outdoors.

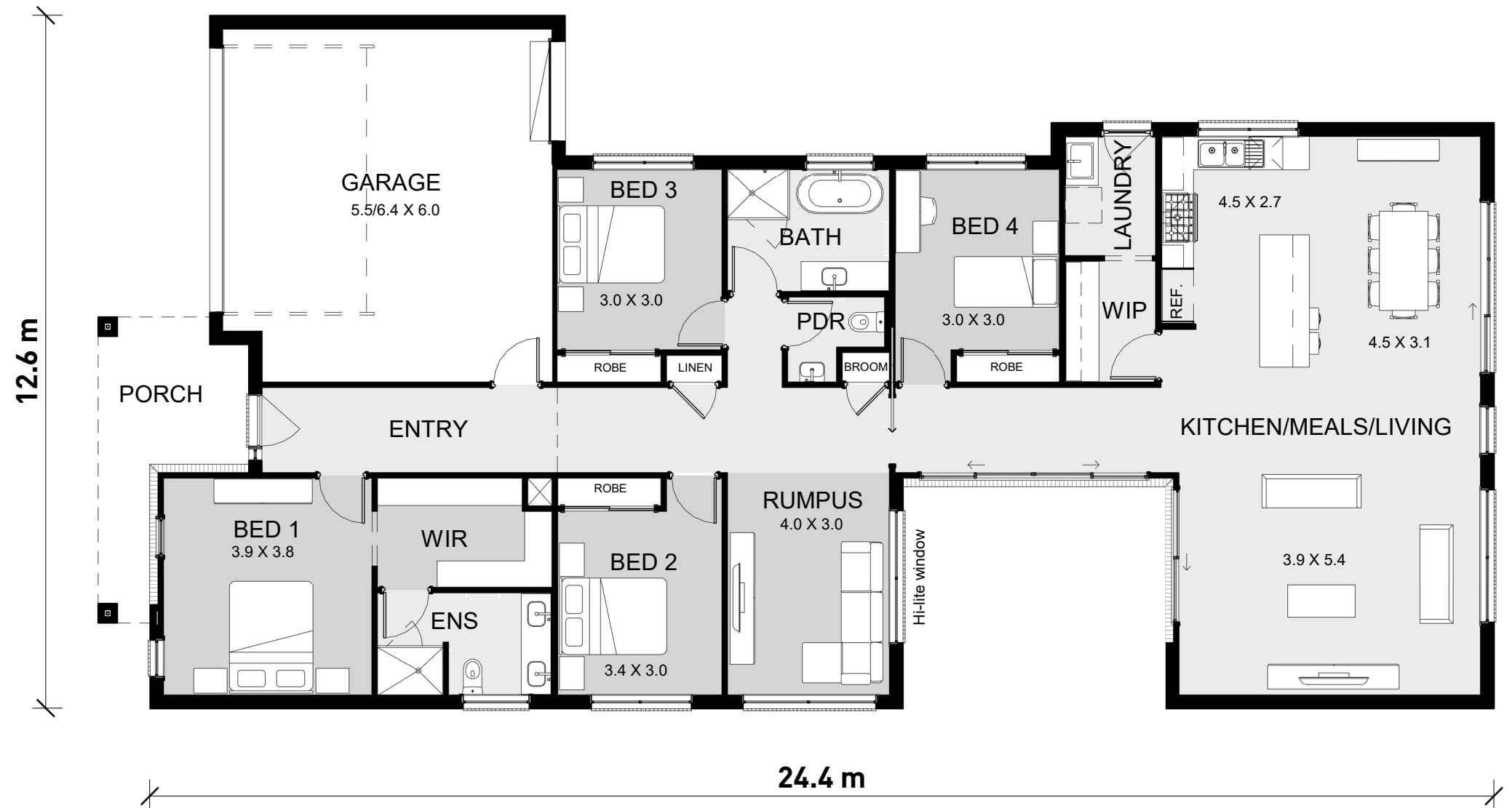
The master bedroom is located at the front of the home and includes a walk-in robe, and ensuite with large shower as well as double vanity.

Three further double-bedrooms are all positioned off the hallway, along with the central bathroom and large rumpus. The rear living and central courtyard give flexibility for maximizing the orientation of the home to multiple northerly orientations.

The Erskine 250 also features roller door access from the garage to the side of the yard, along with double glazed windows and doors and a Solar ChargePack including Tesla Powerwall.

Lot Width: 14.0m Min.
Lot Length: 32.0m Min.

	Area	Squares
Residence Area	197.5 m ²	21.3
Garage Area	42.6 m ²	4.6
Porch Area	9.7 m ²	1.0
	249.9 m ²	26.9



Sales Floor Plan
1 : 100

© Copyright Hamlan Homes

Some images are artistic impressions and are indicative only. While best endeavours have been used to provide information in this publication that is true and accurate. Hamlan Homes and related entities accepts no responsibility and disclaim all liability to any errors or inaccuracies it may contain. Prospective purchasers should make their own inquiries to verify the information contained herein.

hamlan.com.au

359 Moorabool Street Geelong VIC 3220

T: 5222 5555 / E: info@hamlan.com.au