

Building dreams from the ground up.

HAMLAN



Johanna 274, Focus Facade

Like the powerful and beautiful Johanna beach, the Johanna 274 will leave a lasting impression.

This design features our signature central courtyard which creates a home that is light, bright and well connected to the outdoors.

When you first step into the Johanna 274, you're instantly impressed by the sense of space with its wide entry that opens into the adjacent formal lounge.

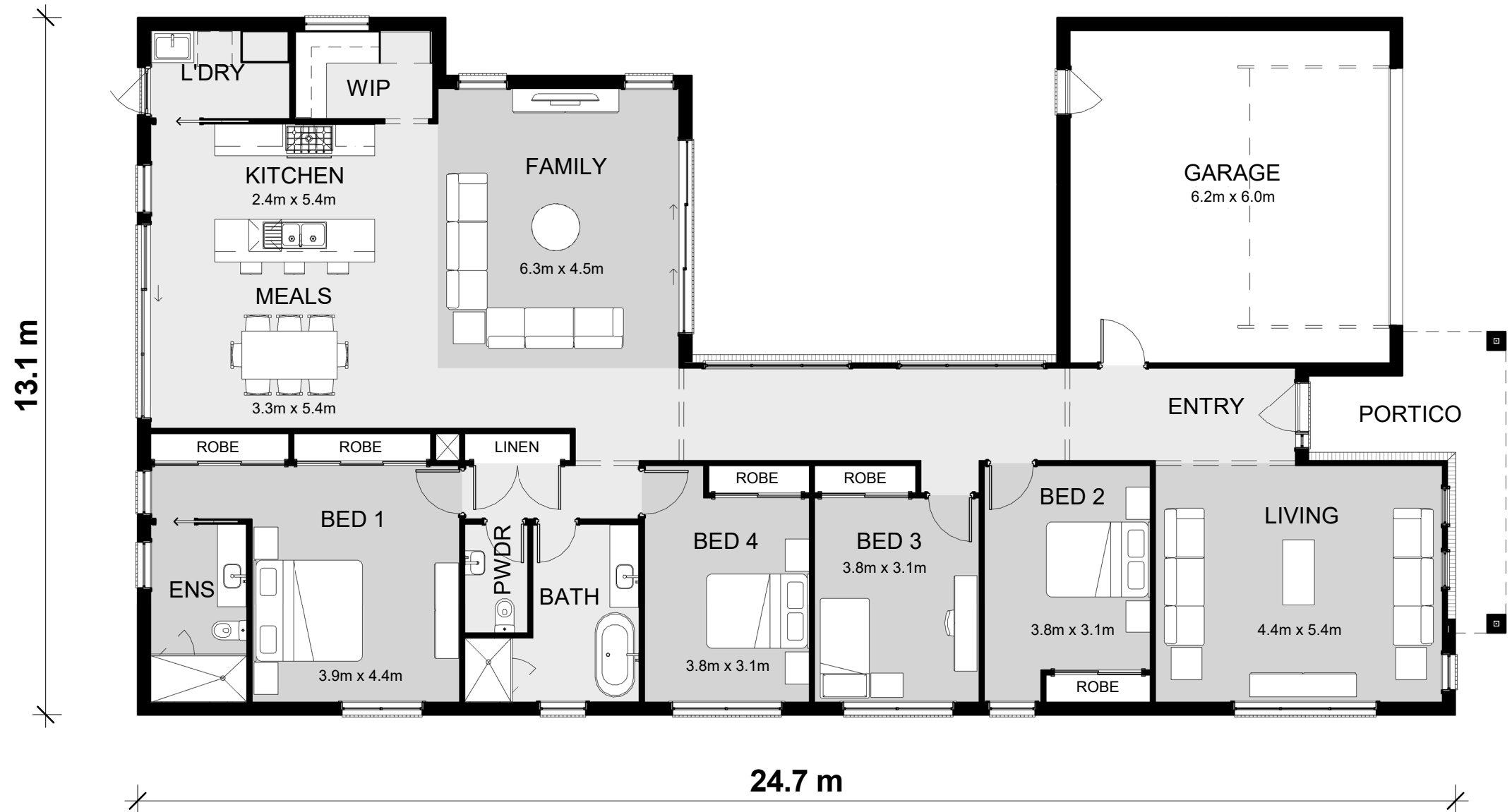
The kitchen, meals and family room are a spacious area to relax or entertain. The design successfully brings the outside in using stacker doors that lead to the courtyard.

The modern kitchen features an Essa stone bench and 900mm Smeg appliances. The walk-in-pantry has plenty of storage and it includes a window which provides lots of natural light.

The generous master bedroom at the rear of the home, includes a wall length robe with plenty of storage and the ensuite features a large shower.

Lot Width: 15.27m Min.
Lot Length: 32.0m Min.

	Area	Squares
Residence Area	221.1 m ²	23.8
Garage Area	42.6 m ²	4.6
Porch Area	10.2 m ²	1.1
	273.9 m ²	29.5



Sales Floor Plan
1 : 100

© Copyright Hamlan Homes

Some images are artistic impressions and are indicative only. While best endeavours have been used to provide information in this publication that is true and accurate. Hamlan Homes and related entities accept no responsibility and disclaim all liability to any errors or inaccuracies it may contain. Prospective purchasers should make their own inquiries to verify the information contained herein.

hamlan.com.au

359 Moorabool Street Geelong VIC 3220

T: 5222 5555 / E: info@hamlan.com.au