



# Johanna201

Echo

Lot 2714 Mattnick Blvd  
Charlemont Rise

3 2 2

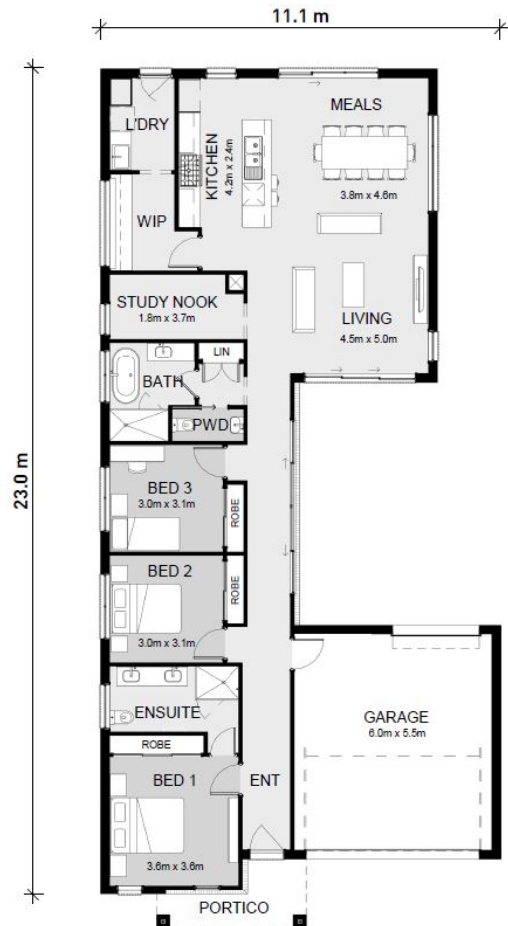
House Size:  
**29.5**  
Lot Size:  
**447m<sup>2</sup>**

Package Price:

# \$908,305

## It's all included

- \_\_\_\_\_ Tesla Solar & Battery
- \_\_\_\_\_ Double Glazed Windows
- \_\_\_\_\_ Colorbond Steel Roof
- \_\_\_\_\_ Site Cost Allowance
- \_\_\_\_\_ Developer Requirements
- \_\_\_\_\_ 2550mm Ceiling Height
- \_\_\_\_\_ Floor coverings
- \_\_\_\_\_ Insitu Tiled Showerbase
- \_\_\_\_\_ SMEG 900mm Underbench Oven & Cooktop
- \_\_\_\_\_ Stone benchtops to kitchen



**HAMLAN**

Contact your  
new home  
consultant **today**

Ash Afshar  
ash@geelonghomes.com.au

hamlan.com.au



Local Builders. Local Suppliers. Local People.

Charlemont Rise

Images are for illustrative purposes only and may not represent the final product. Prices are based on availability and price of land. Hamlan Homes reserves the right to alter any price or substitute any home without prior notice. All house and land packages are subject to developers final approval. Speak to a new home consultant for more information. www.hamlan.com.au Images are for illustrative purposes only and may not represent the final product. Prices are based on availability and price of land. Hamlan Homes reserves the right to alter any price or substitute any home without prior notice. Speak to a new home consultant for more information. www.hamlan.com.au