



Carisbrook240

Element

Lot 2716 Mattnick Blvd
Charlemont

4 2 2

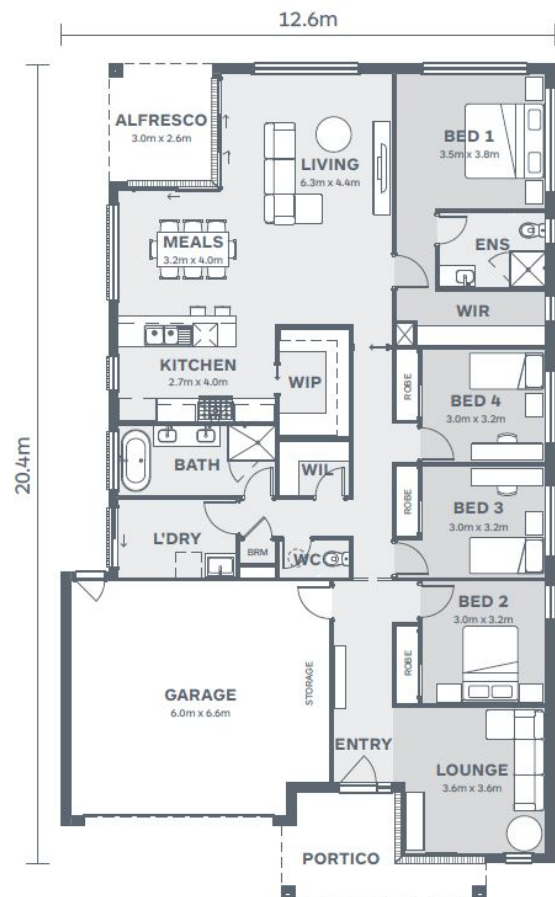
House Size:
25.9SQ
Lot Size:
511m²

Package Price:

\$927,805

It's all included

- _____ Tesla Solar & Battery
- _____ Double Glazed Windows
- _____ Colorbond Steel Roof
- _____ Site Cost Allowance
- _____ Developer Requirements
- _____ 2550mm Ceiling Height
- _____ Floor coverings
- _____ Insitu Tiled Showerbase
- _____ SMEG 900mm Underbench Oven & Cooktop
- _____ Stone benchtops to kitchen



HAMLAN

Contact your
new home
consultant **today**

Courtney Selway
courtney@hamlan.com.au
0439 605 971

hamlan.com.au



Local Builders. Local Suppliers. Local People.



Images are for illustrative purposes only and may not represent the final product. Prices are based on availability and price of land. Hamlan Homes reserves the right to alter any price or substitute any home without prior notice. All house and land packages are subject to developers final approval. Speak to a new home consultant for more information. www.hamlan.com.au Images are for illustrative purposes only and may not represent the final product. Prices are based on availability and price of land. Hamlan Homes reserves the right to alter any price or substitute any home without prior notice. Speak to a new home consultant for more information. www.hamlan.com.au