



# Carisbrook240

Boathouse

Lot 3316 Bedrock Drive  
Fyansford

4 2 2

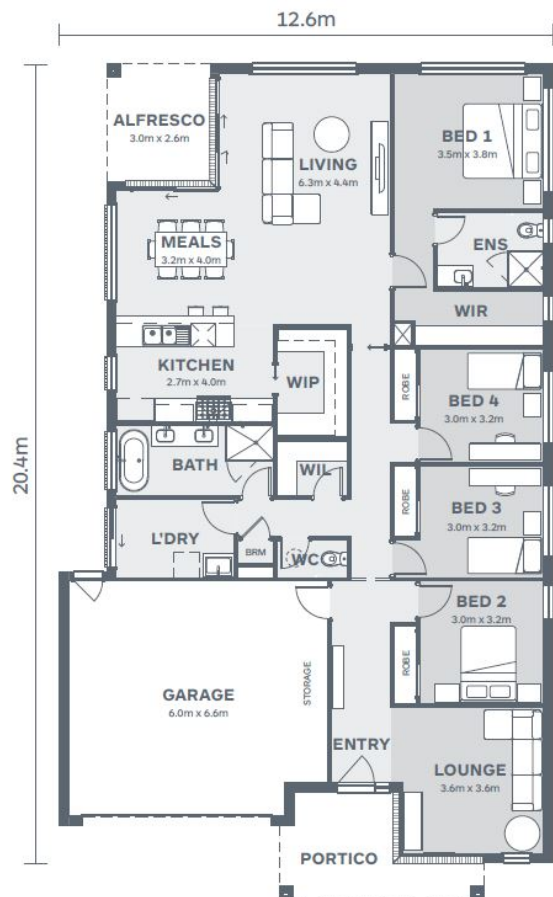
House Size:  
**25.9SQ**  
Lot Size:  
**476m<sup>2</sup>**

Package Price:

# \$1,036,680

It's all included

- \_\_\_\_\_ Tesla Solar & Battery
- \_\_\_\_\_ Double Glazed Windows
- \_\_\_\_\_ Colorbond Steel Roof
- \_\_\_\_\_ Site Cost Allowance
- \_\_\_\_\_ Developer Requirements
- \_\_\_\_\_ 2550mm Ceiling Height
- \_\_\_\_\_ SMEG 900mm Oven
- \_\_\_\_\_ SMEG 900mm Underbench Oven & Cooktop
- \_\_\_\_\_ Stone benchtops to kitchen



**HAMLAN**

Contact your  
new home  
consultant **today**

Narelle Sommerville  
narelle@hamlan.com.au

hamlan.com.au



Local Builders. Local Suppliers. Local People.

Images are for illustrative purposes only and may not represent the final product. Prices are based on availability and price of land. Hamlan Homes reserves the right to alter any price or substitute any home without prior notice. All house and land packages are subject to developers final approval. Speak to a new home consultant for more information. [www.hamlan.com.au](http://www.hamlan.com.au) Images are for illustrative purposes only and may not represent the final product. Prices are based on availability and price of land. Hamlan Homes reserves the right to alter any price or substitute any home without prior notice. Speak to a new home consultant for more information. [www.hamlan.com.au](http://www.hamlan.com.au)

