



# Cumberland242

Prism

35-37 Phelan Street  
Point Lonsdale

4 2 2

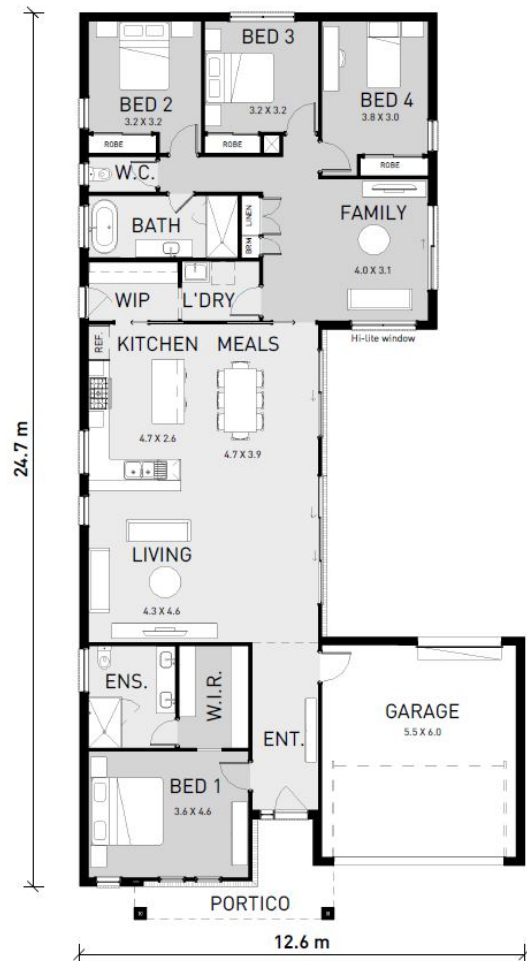
House Size:  
**26SQ**  
Lot Size:  
**924m<sup>2</sup>**

Package Price:

# \$1,979,000

## It's all included

- \_\_\_\_\_ Tesla Solar & Battery
- \_\_\_\_\_ Double Glazed Windows
- \_\_\_\_\_ Colorbond Steel Roof
- \_\_\_\_\_ Site Cost Allowance
- \_\_\_\_\_ Developer Requirements
- \_\_\_\_\_ 2550mm Ceiling Height
- \_\_\_\_\_ Floor coverings
- \_\_\_\_\_ SMEG 900mm Underbench Oven & Cooktop
- \_\_\_\_\_ Stone benchtops to kitchen



**HAMLAN**

Contact your  
new home  
consultant **today**

Chris Dooling  
chris@hamlan.com.au  
0458007776

hamlan.com.au



Local Builders. Local Suppliers. Local People.

**HAMLAN**

Images are for illustrative purposes only and may not represent the final product. Prices are based on availability and price of land. Hamlan Homes reserves the right to alter any price or substitute any home without prior notice. All house and land packages are subject to developers final approval. Speak to a new home consultant for more information. www.hamlan.com.au Images are for illustrative purposes only and may not represent the final product. Prices are based on availability and price of land. Hamlan Homes reserves the right to alter any price or substitute any home without prior notice. Speak to a new home consultant for more information. www.hamlan.com.au